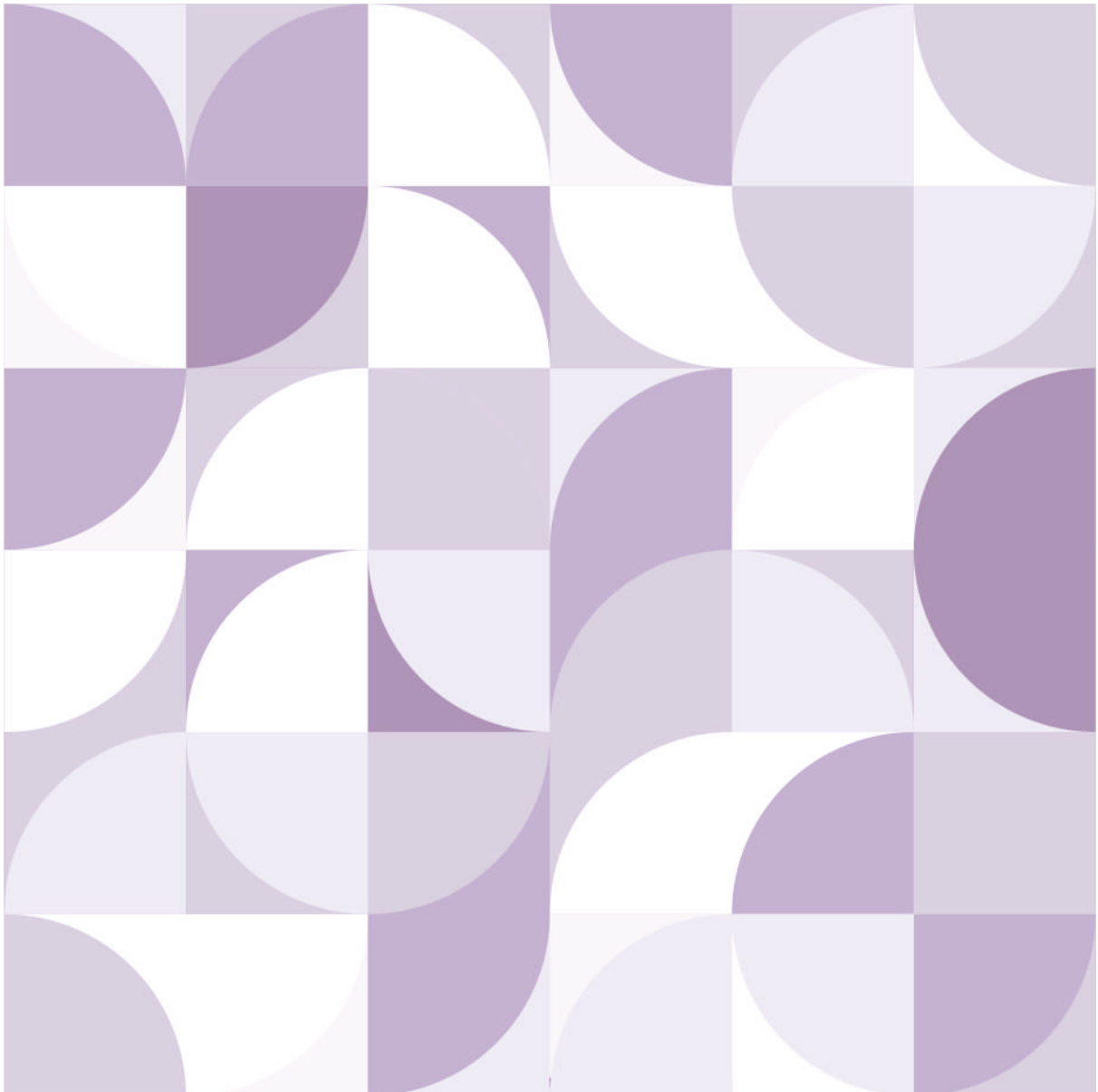


WOVIN

— WOVEN VINYL WALLCOVERING —





an
innovative &
premium
woven vinyl
wall covering

We offer a comprehensive solution with excellent abrasion resistance and durability, based on our knowledge and technology acquired.

Product brings rich weave construction and offers a wall covering solution with high-tech features while meeting the most current design element.

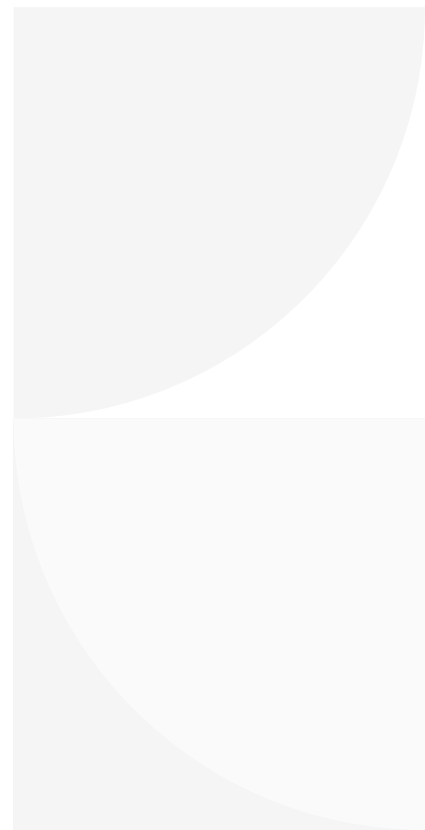
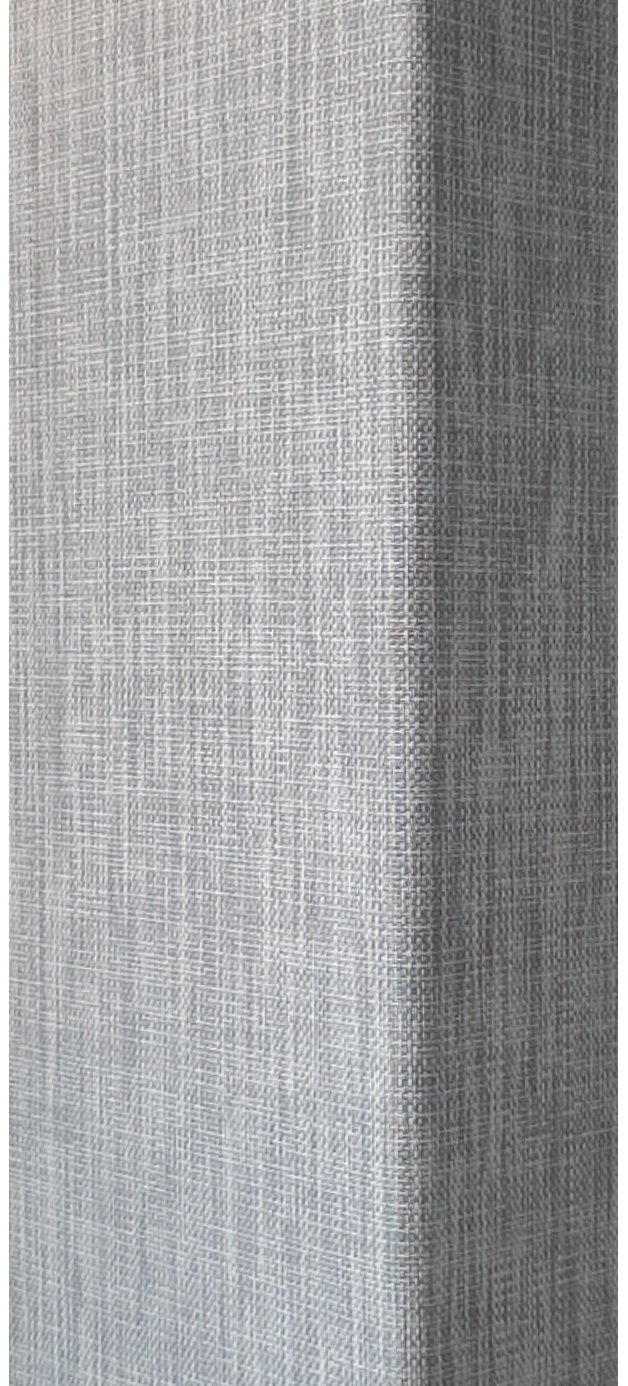
It's the best alternative to traditional wallpapers combining the aesthetic of luxury with a heavy duty and waterproof material.

Innovative construction of the material helps architects and interior designers when using our products, allowing them to create a large number of textured design compositions.

WOVIN is one of the most highly demanded wall covering solutions, for office, hospitality, restaurant, school, banks, retail, club & residential as it offers wide functional and usability.

Our designer product solution which provides architects and interior designers with a tool that will allow their imagination to run wild, out of the box and create unique, customised environments with a high degree of design, durability and functionality.

All with sustainability, respect for the environment and the mother earth.



advantages

- Designer & Innovative product.
- Excellent abrasion resistance, offers the product high durability.
- Easy to clean and maintain, even bleach washable.
- Surface with high friction resistance, making it an ideal product for high-traffic environments.
- Phthalates free and quality raw materials.
- Wide selection and designs.



Anti-Fungus



Lead Free



Phthalate
Free



Environment
Friendly



application areas



Office & Corporate



Bank



School



Medical Practice



Hospitality



Residential



Shops



Gym



Public Area





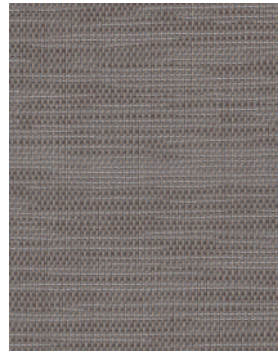
Chroma Plain



Chroma White



Chroma Beige



Chroma Brown



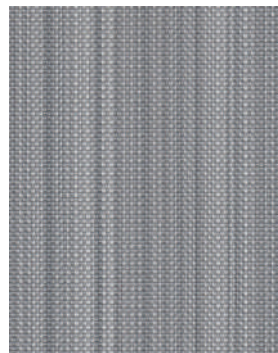
Natural Ivory



Natural Mist



Natural Beige Stripes



Natural Ash

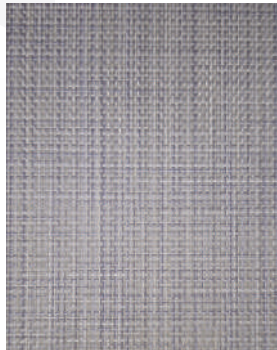




Media Green



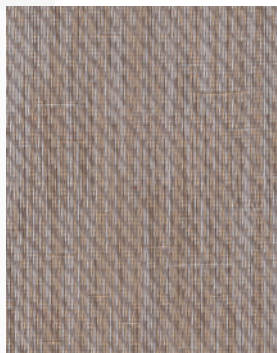
Media Bloom



Media Blue



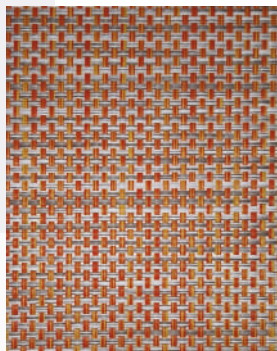
Weave Light



Weave Bombay



Weave Fishbone Grey



Weave Red

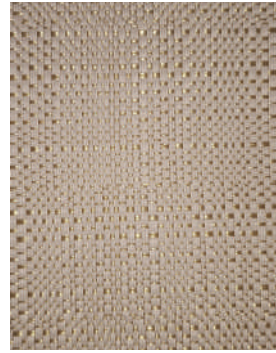


Rottan Beige

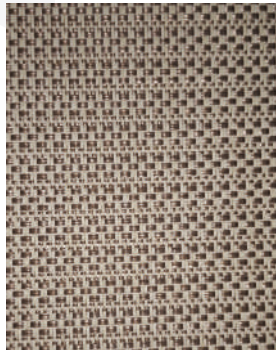




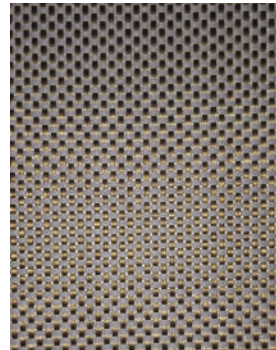
Bamboo Beige



Luxor Hilton



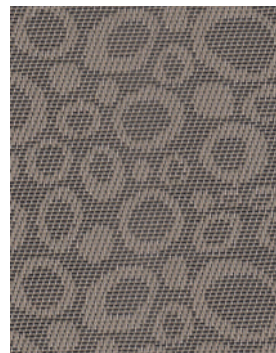
Luxor JW



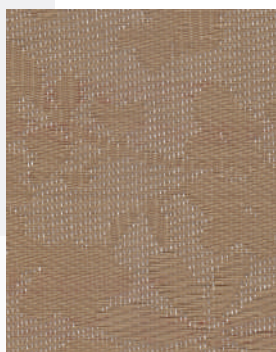
Luxor Faremount



Luxor Metallic



Ethnic Circle

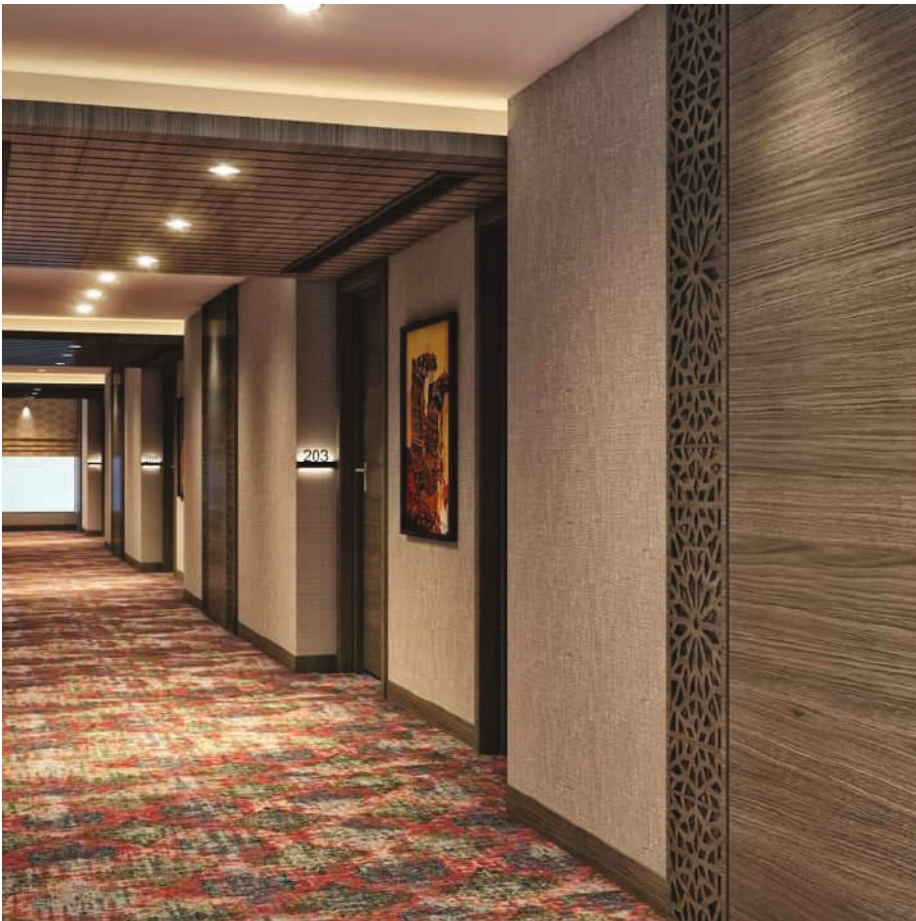


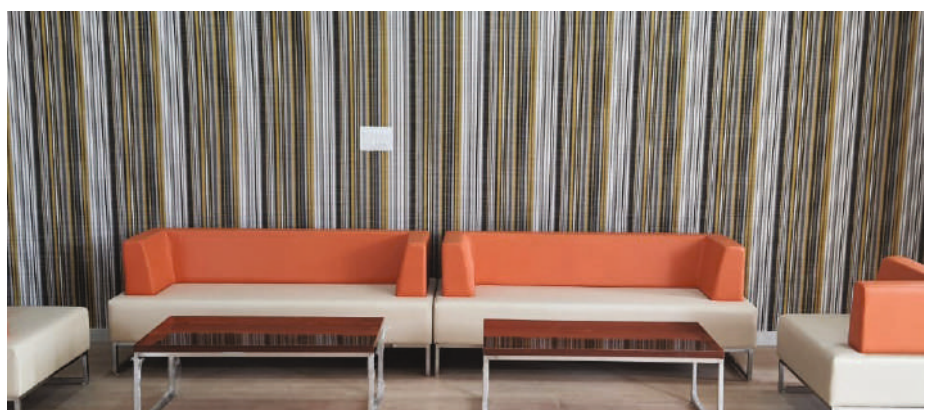
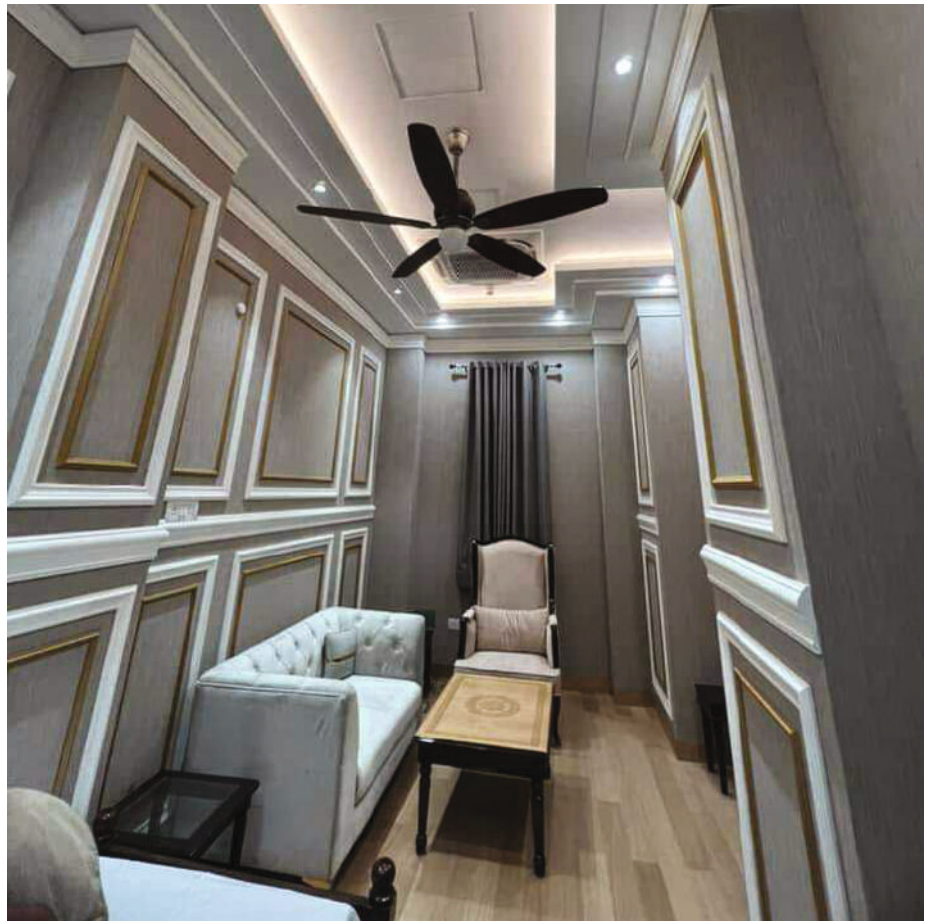
Ethnic Golden Flower

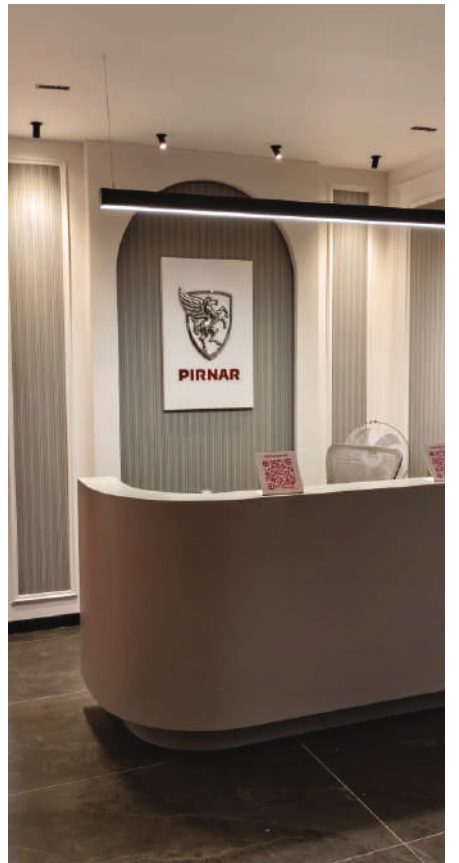
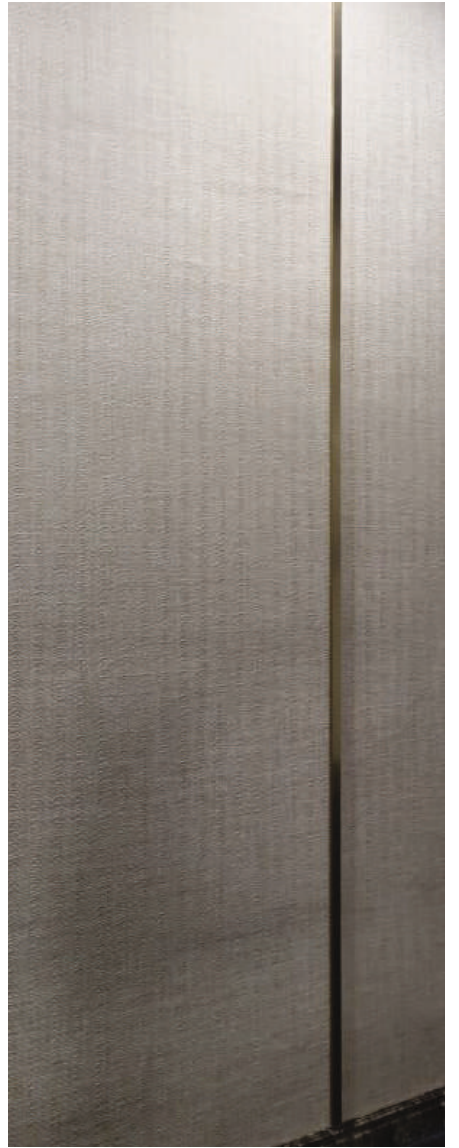


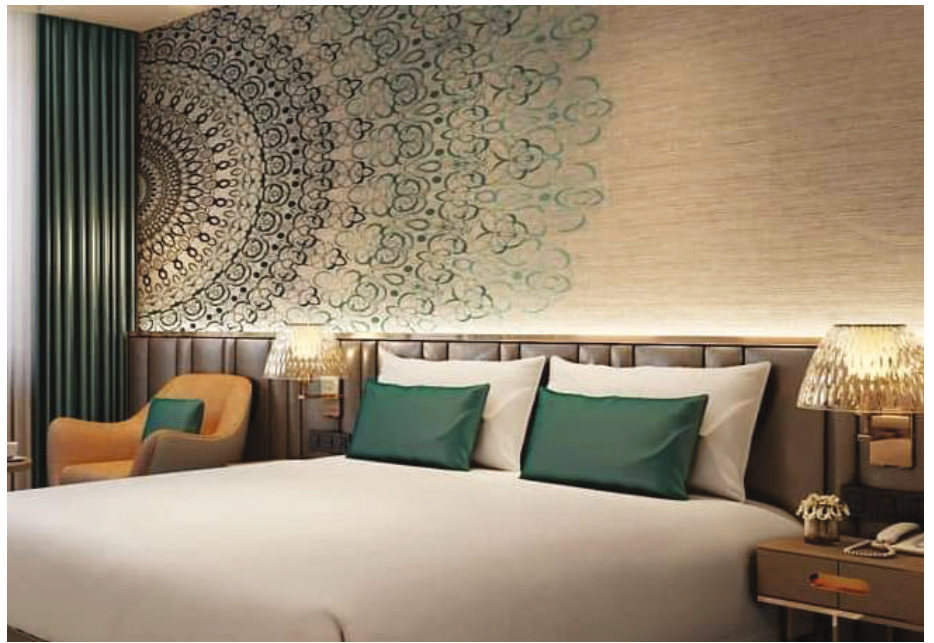
Stripes yellow

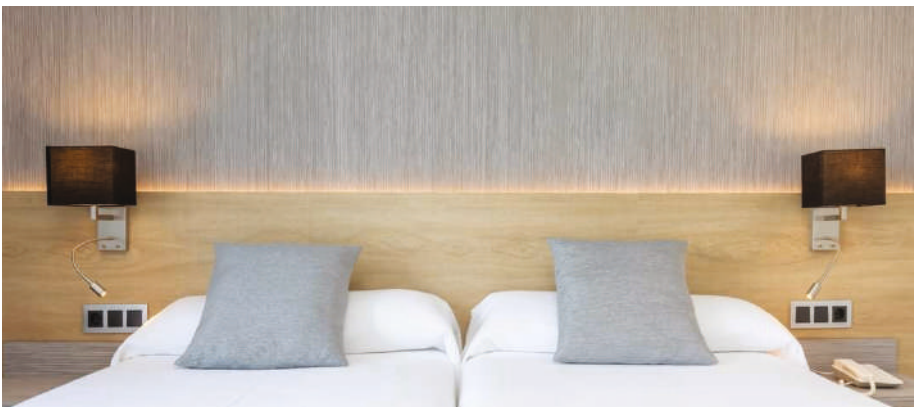




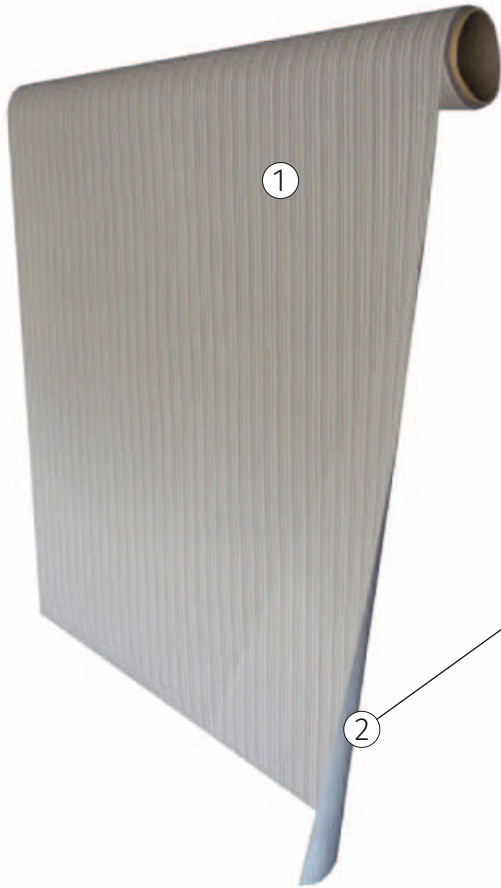




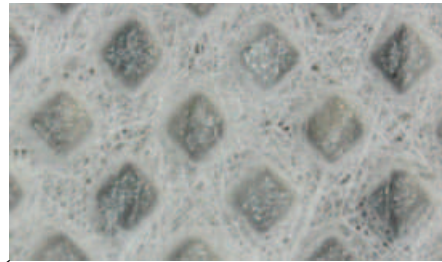




technical data sheet



- ① Woven Vinyl 95% PVC FR, 5% Polyester
- ② Backing: 100% Non Woven Fabric



Fire Retardant



Ecological



Chemical Resistant



Silent



UV Ray Resistant



Waterproof

Characteristics	Test	Woven Wall Covering
Roll width		1.50 m
Roll Length		15 m
Roll diameter		0.22/0.24 m
Thickness		1.50 mm
Weight		900 gm/m ²
Chemical resistance	EN 423	Class 0
Fire resistance	EN 13501	B-S1 d0
UV resistance	ISO 105-B02	≥Grade 8
Fungus test	ASTM G21 96	Grade 1
Skew and Bow	EN 427	Max 2%
Dimensional Stability	EN 434:1994	0.05% (X + Y Direction)
Curling	EN 434:1994	1.5 mm

technical properties/details

WOVIN wall covering is a woven vinyl collection available in different decors. The textile nature of this product and its fabrication process make it have some aspects to be considered.

1. BATCH LOT:

Because of textile process, the batch control must be considered, since is possible some little difference in color from one batch to another.

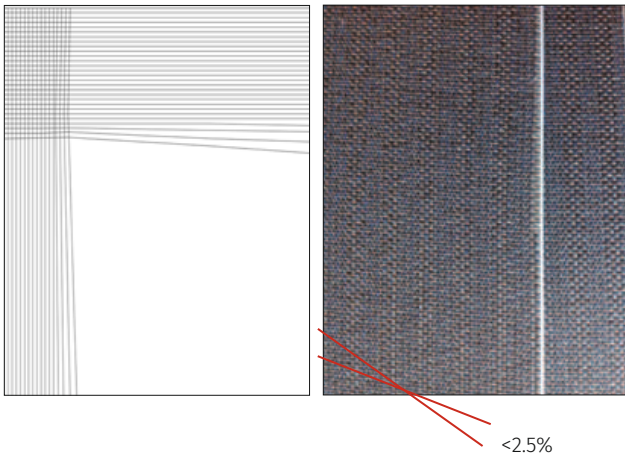
It is specified in each roll label:

14 05 0032
Year Week Production Number

Special designs can be considered, but must be an approval process. Minimum 1000 m² and price must be +10% due to all set up process.

2. SKEW AND BOW:

Due to the textile manufacturing process, there could appear certain deviations that would affect the final result of the roll. Deviation lower than 2.5 % must be accepted, it means that for every lineal meter the threat mustn't be deviated more than 2.5 cm.



3. ROLL WIDTH:

The width of the roll is minimum 1500 mm, with possible +50 mm. In case of narrow width it will be advice.

Special width can be considered, but waste must be considered and confirmed in each case. Also pallet system will be affected.

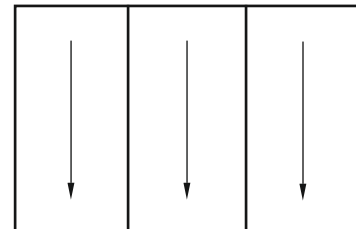
4. ROLL LENGTH:

The length of the roll is 15 mtrs, some extra length can be considered in some cases.

Special lengths can be considered, but waste must be considered and confirmed in each case. Also pallet system will be affected.

5. DIRECTION OF THE ROLL:

It's important for a design consistency, during installation. The direction of application must be respected.



6. RECOMMENDED ADHESIVE:

Bartoline Wall Covering Adhesive (Heavy Grade)

7. DISCLAIMER

Images used in this brochure are for representation purpose only. Actual product may differ from the image.

our clients

					<i>and many more...</i>

———— WE ALSO OFFER ————

WOVEN VINYL FLOORS
LUXURY VINYL TILE (LVT)
PREMIUM VINYL WALLCOVERING

VIBRANT FLOORS PRIVATE LIMITED

A-76, 2nd Floor, DDA Shed, Okhla Industrial Area, Phase-2, New Delhi - 110020

☎ 011-49043159

✉ info@vibrantfloors.in

🌐 www.vibrantfloors.in